

# GAIT AND POSTURE IN THE BIPED

-by John Falkner-Heylings BSc(PodMed), DipPodM, FPSPract Podiatrist

Habitually quadrupedal apes can stand on two legs for short periods, but as *facultative* bipeds they expend a considerable amount of energy to achieve two-legged stance and make progress in this manner. Human beings, however, are *obligate* bipeds, designed for habitual vertical stance and bipedal gait.

Vertical stance in the human is energy-efficient. The bones of the lower skeleton are close-packed in vertical stance and form an effective 'pillar' or 'pedestal' by means of which the weight of the body is supported on the lower limbs and transmitted to the ground surface. Balance replaces muscular effort. Skeletal support requires very little muscular intervention, the very small input required for maintenance of balance being applied only 'on-demand'.

Bipedal *Homo sapiens* – ourselves – have a low centre of gravity. This is situated within the pelvis, just superior to the hip joints. In upright stance, the weight of the upper body falls upon the sacrum, and would tilt the pelvis backwards if the rotation was not resisted by the iliofemoral ligaments. The consequence of this is that the body is balanced at a point in the midline close to the hip joints, and the system promotes extension and prevents 'jack-knifing'.

The knee is held in extension (limb straight) in standing. It can be hyperextended, pressed backwards to lock the joint, preventing collapse when obliged to stand for long periods. Knee extension is aided by the shape of the femoral condyles and the thick cartilage meniscus into which they sit. The femur is prevented from sliding forward or backward off the menisci by the anterior and posterior cruciate ligaments and is retained on the cartilage by the collateral ligaments.

The tibia pivots upon the trochlear surface of the talus. The centre of gravity falls over the midtarsal joint region of the foot, causing the body to have a predisposition to falling forward. Forward motion is countered by contraction of the soleus, originating upon the calcaneum and inserting onto the tibia (this is correctly described when the foot is plantigrade and fixed – remember that origin and insertion are notional terms only and depend upon the 'fixation' – the origin is considered to be the 'fixed' end and the insertion is on the part that moves *c.f. gastrocnemius*).

When standing on one leg, the centre of gravity is shifted over the stance limb. Changing to the opposing limb requires the centre of gravity to be shifted to a new position over the contralateral limb. Valgus femurs position the knees and feet beneath the pelvis and close to the body midline so that the shift is minimised.

In gait, the swing side pelvis must be raised to free the limb for swing. Thus with alternation of limbs the pelvis must tilt, first to one side, then the other.

As the swing limb advances, the limb is lengthened and the pelvis rotated so that heel strike occurs as far forward as possible. The same heel must remain on the ground as long as possible at the end of the stance phase and at this point the pelvis is fully counter-rotated.

Pelvic lateral shift, pelvic tilt, pelvic rotation, and valgus femurs all act to minimise the displacement of the centre of gravity. Further smoothing is produced by knee flexion and ankle action. These actions collectively mean that:

***“In translating the centre of gravity through a smooth undulating pathway of low amplitude,  
the human body conserves energy....”*** (Saunders *et al.*, 1953).

## Reference

Saunders JB de CM, Inman VT, Eberhart HD. The Major Determinants in Normal and Pathological Gait  
*J Bone Joint Surg Am* 1953;35:543-558

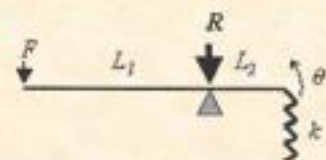
**Valgus femurs  
position the knees  
and feet inside the  
width of the pelvis  
and beneath the  
centre of gravity**



## **In particular.....**

the centre of gravity in stance is within the pelvis and close to the hip joints:

- **weight of body force falls on sacrum (*pelvis rolls backwards*)**
- **backward roll is resisted by iliofemoral ligaments**
- **resultant force falls on hip joints**



**GAIT AND POSTURE IN THE BIPED**

*Answers should be submitted on A4 paper and should be of sufficient length to demonstrate full understanding of the topic. Single word answers are not permissible. Try to answer in one or two short paragraphs, not more than a 1/4 page per answer.*

**Q1.** *'Vertical stance is energy efficient'* Explain why.

**Q2.** What is the significance of the placement of the centre of gravity in *homo sapiens*?

**Q3.** Explain the action of the knee in bipedal stance.

**Q4.** What is the significance of the centre of gravity being positioned over the midfoot?

**Q5.** How does the pelvis function in bipedal gait?

***Return this page with the administration fee (see Alliance webpage) and your answers to:***

***Alliance CPD Dept, Gateway, Forest Moor Road, Knaresborough HG5 8JY***

***10 CPD points will be awarded for successful completion.***

Failure to gain 40 CPD points in a practice year will leave you eligible for audit.

---

Name: .....

Address: .....

.....

.....

Post Code: .....

---